

# Actuator

71-642.0

Distribution by  
Mouser



<https://mouser.eao.com/p/71-642.0>

Your product:



# 71-642.0

## Actuator

### MOUNTING

**Mounting type:** Panel mounting

### OPERATING-/INDICATION PART

**Lever material:** plastic

**Lever shape:** short

### ELECTRICAL CHARACTERISTICS

<b>Switching voltage and switching current:</b>	Switch rating AC cosφ 0,7 ... 0,8		
	gemäss EN IEC 60947-5-1		
	Voltage	250 VAC	
	Current	3 A	
	Switch rating DC		
	gemäss EN IEC 60947-5-1		
	Voltage	24 VDC	250 VDC
	Current	3 A	0.5 A
<b>Surge voltage resistance:</b>	2500 VAC, 50 Hz, 1 minute, as per DIN / IEC 60512-2 between all terminals and earth		
<b>Recommended minimum operational data:</b>	Voltage	5 VAC/DC	
	Current	10 mA	
<b>Switching rating:</b>			

### MECHANICAL CHARATERISTIC

<b>Switching action:</b>	Maintained - Rest
<b>Switching system:</b>	Self-cleaning, double-break snap action switching system, 1 normally closed and 1 normally open contact per element.
<b>Switching positions:</b>	2 positions
<b>Switching angle:</b>	90° left
<b>Mechanical lifetime:</b>	100 000 cycles of operation

**Tightening torque:** Fixing nut max. 0.5 Nm

**Weight:** 0.003 kg

## AMBIENT CONDITION

**IP Protection:** IP65 front side

**Operating temperature:** – 25 °C ... + 55 °C

**Storage temperature:** – 40 °C ... + 85 °C

**Shock resistance:** Max. 500 m/s<sup>2</sup>, pulse width, 3-axis (sinusoidal EN IEC 60068-2-27)

**Vibration resistance:** Max. 100 m / s<sup>2</sup> from 10 Hz ... 500 Hz, (sinusoidal EN IEC 60068-2-6)

**Climate resistance:** Damp heat, steady: 56 days, + 40 °C/93 % relative humidity, according to EN IEC 60068-2-78

## CERTIFICATE

**Conformities:** CE, UKCA, 2011 / 65 / EC (RoHS), 2014 / 35 / EU (LVD)

**REACH:** REACH compliant

**RoHS:** RoHS compliant

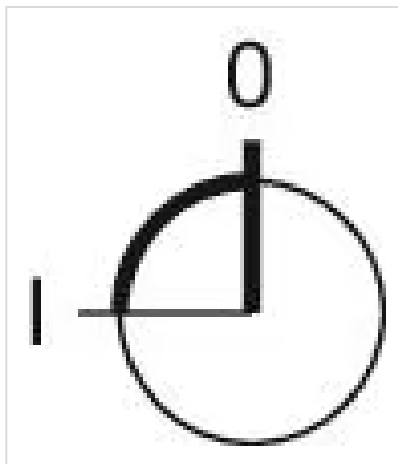
## OTHER

**Short Description:** Actuator, optional illuminative, short, Maintained - Rest

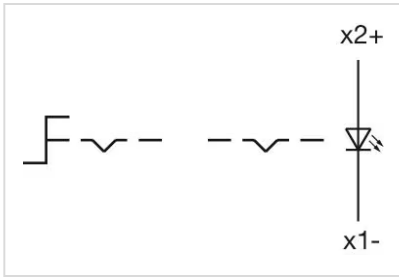
**Housing material:** Plastic, according to UL 94 V0

**Hints:** Pitch of the front plate mounting holes must agree with the printed circuit board holes Ø 3.5 mm

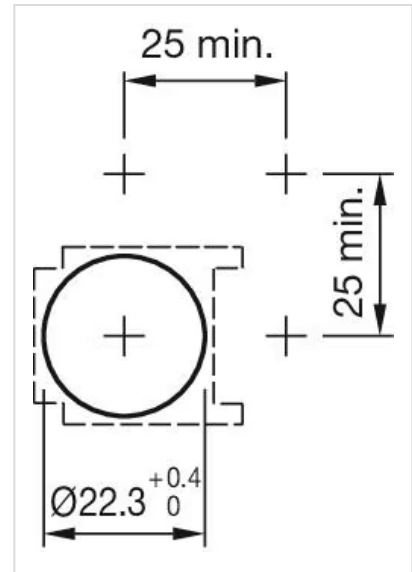
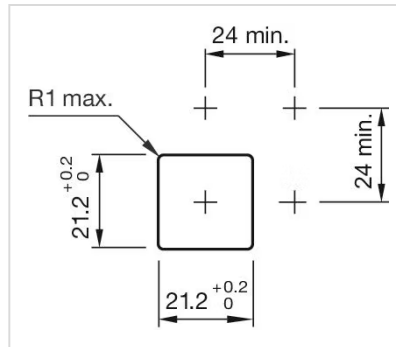
**Switching positions:**



**Wiring diagrams:**



#### Mounting cut-outs:



#### Dimension drawings:

