

Indicator 16 mm

82-4152.01A4

Distribution by
Mouser



<https://mouser.eao.com/p/82-4152.01A4>

Your product:



82-4152.01A4
Indicator 16 mm

FRONT

Front dimension:	Ø 18 mm
Front form:	Round
Front bezel material:	Stainless steel
Front bezel shape:	Flush

MOUNTING

Mounting cut-out:	Ø 16 mm
Mounting type:	Panel mounting

OPERATING-/INDICATION PART

Lens colour:	Silver
Lens material:	Stainless steel
Lens illumination:	Illuminated
Lens shape:	Flush
Lens optics:	opaque
Illumination colour:	Red / Green
Shape of illumination:	Ring

ELECTRICAL CHARACTERISTICS

Switching voltage and switching current:	according to UL 508 (Silver contacts)	
	cosφ 0,75 ... 0,8	
	Voltage	Current
	120 VAC	5 A
	240 VAC	3 A
	24 VAC	1 A

according to IEC 60947-5-1 (Silver contacts)

Service categorie AC-15

Voltage

24 VAC

35 VAC

110 VAC

220 VAC

Switch rating DC service categorie DC-13 (Silver contacts)

Voltage

24 VDC

35 VDC

110 VDC

220 VDC

Current

1 A

1 A (M12 version)

1 A

0.5 A

Current

0.7 A

0.5 A (M12 version)

0.2 A

0.1 A

Operating voltage: 24 V AC/DC

Operation current: 7 mA

Rated Operational Voltage Ue: 250 VAC

Rated insulation voltage Ui: 250 V

Switching rating:

Electrical lifetime: 50 000 cycles of operation

Electric strength: 1500 VAC, 50 Hz 1 minute between life terminals and ground

Pollution degree: 2, according to EN IEC 60947-1

Thermal current Ith: 5 A

MECHANICAL CHARACTERISTIC

Terminal: Screw terminal

Tightening torque: 0.5 ... 0.6 Nm, Screw terminal 0.1 Nm

Weight: 0.018 kg

AMBIENT CONDITION

IP front protection: IP65, IP67

Operating temperature: – 30 °C ... + 70 °C

Storage temperature: – 40 °C ... + 80 °C

Shock resistance: Max. 500 m / s² as per IEC 60068-2-27

Vibration resistance: 10 ... 500 Hz, amplitude 1.5 mm p-p according to IEC 60068-2-6

Climate resistance: Damp heat, 21 days according to IEC 60512-11

CERTIFICATE

Approbations: CB, CCC, C UL, UL

Conformities:

CE, 2011 / 65 / EC (RoHS), 2014 / 35 / EU (LVD)

REACH:

REACH compliant

RoHS:

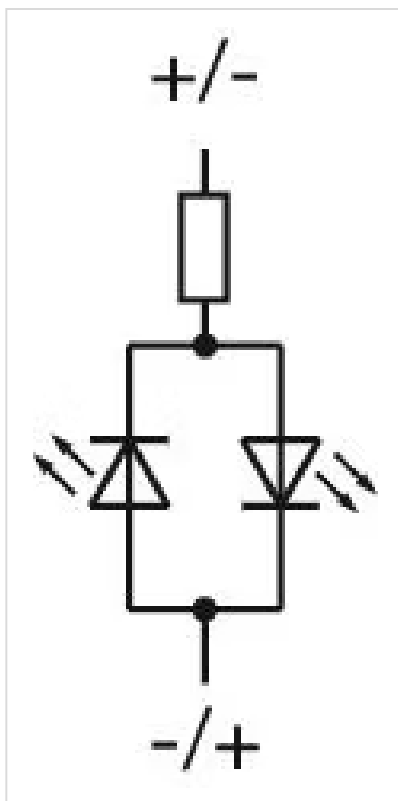
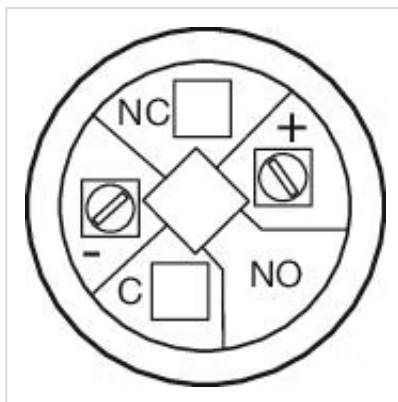
RoHS compliant

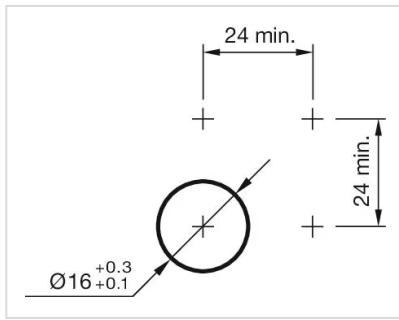
OTHER**Short Description:**

Indicator 16 mm, , 24 V AC/DC, Screw terminal, Round, Stainless steel, Red / Green, Silver

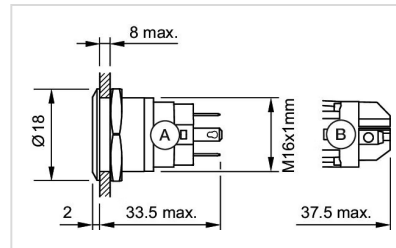
Kind of illumination:

Bi-colour-LED

Wiring diagrams:**Component layouts:****Mounting cut-outs:**



Dimension drawings:



A = Solder terminal
B = Screw terminal