

Indicator 16 mm

82-4551.0133

Distribution by
Mouser



<https://mouser.eao.com/p/82-4551.0133>

Your product:



82-4551.0133

Indicator 16 mm

FRONT

| | |
|-----------------------|-----------|
| Front dimension: | Ø 18 mm |
| Front form: | Round |
| Front bezel material: | Aluminium |
| Front bezel shape: | Flush |

MOUNTING

| | |
|-------------------|----------------|
| Mounting cut-out: | Ø 16 mm |
| Mounting type: | Panel mounting |

OPERATING-/INDICATION PART

| | |
|------------------------|-------------|
| Lens colour: | Nature |
| Lens material: | Aluminium |
| Lens illumination: | Illuminated |
| Lens shape: | Flush |
| Lens optics: | opaque |
| Illumination colour: | Green |
| Shape of illumination: | Ring |

ELECTRICAL CHARACTERISTICS

| | |
|-------------------------------|------------|
| Operating voltage: | 12 V AC/DC |
| Operation current: | 7 mA |
| Rated Operational Voltage Ue: | 250 VAC |

| | |
|-------------------------------------|--|
| Rated insulation voltage Ui: | 250 V |
| Switching rating: | |
| Electrical lifetime: | 50 000 cycles of operation |
| Electric strength: | 1500 VAC, 50 Hz 1 minute between life terminals and ground |
| Pollution degree: | 2, according to EN IEC 60947-1 |
| Thermal current Ith: | 5 A |

MECHANICAL CHARACTERISTIC

| | |
|---------------------------|----------------------------------|
| Terminal: | Soldering terminal, 2.8 x 0.5 mm |
| Tightening torque: | 0.5 ... 0.6 Nm |
| Weight: | 0.018 kg |

AMBIENT CONDITION

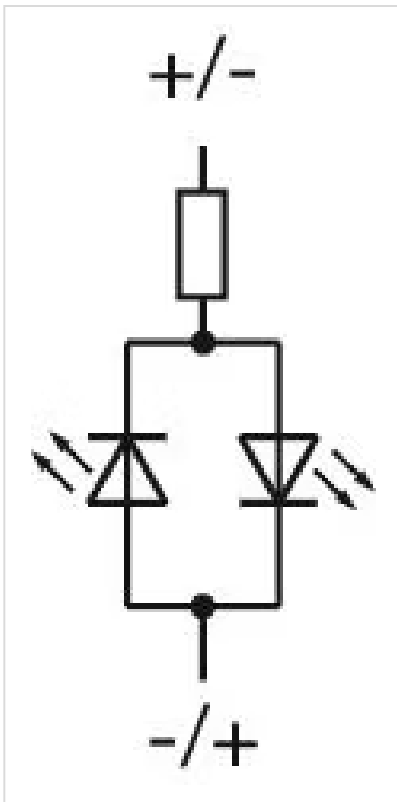
| | |
|-------------------------------|--|
| IP front protection: | IP65, IP67 |
| Operating temperature: | – 30 °C ... + 70 °C |
| Storage temperature: | – 40 °C ... + 80 °C |
| Shock resistance: | Max. 500 m / s ² as per IEC 60068-2-27 |
| Vibration resistance: | 10 ... 500 Hz, amplitude 1.5 mm p-p according to IEC 60068-2-6 |
| Climate resistance: | Damp heat, 21 days according to IEC 60512-11 |

CERTIFICATE

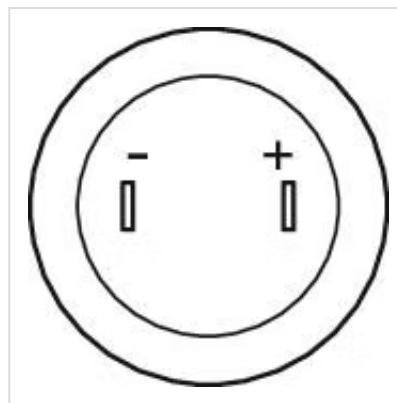
| | |
|----------------------|---|
| Approbations: | CB, CCC, C UL, UL |
| Conformities: | CE, 2011 / 65 / EC (RoHS), 2014 / 35 / EU (LVD) |
| REACH: | REACH compliant |
| RoHS: | RoHS compliant |

OTHER

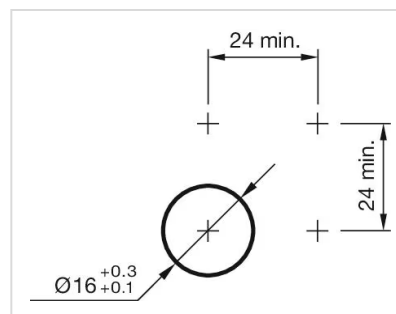
| | |
|------------------------------|--|
| Short Description: | Indicator 16 mm, , 12 V AC/DC, Soldering terminal, 2.8 x 0.5 mm, Round, Aluminium, Green, Nature |
| Kind of illumination: | Single-LED |
| Wiring diagrams: | |



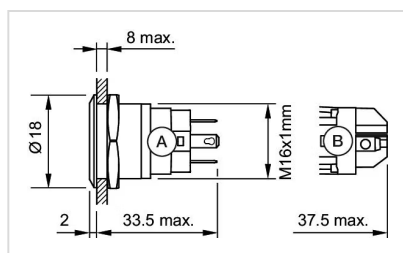
Component layouts:



Mounting cut-outs:



Dimension drawings:



A = Solder terminal
B = Screw terminal