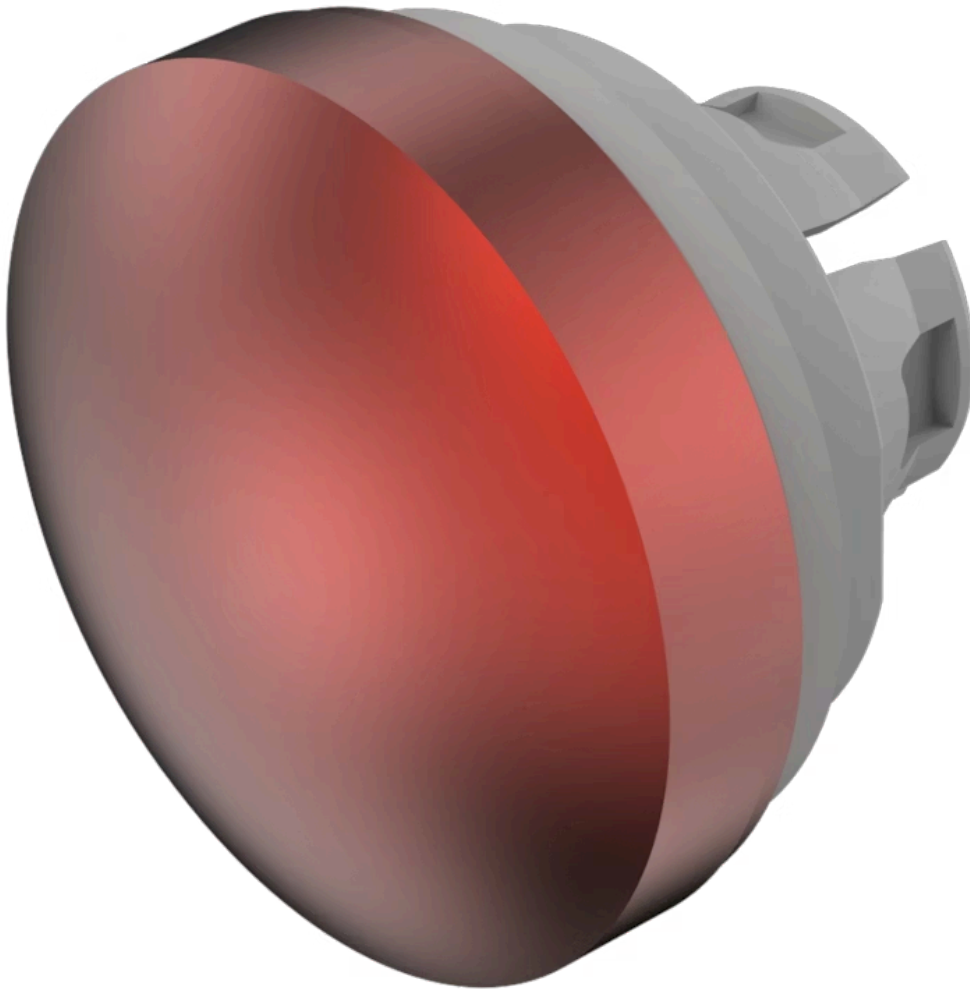


Lens

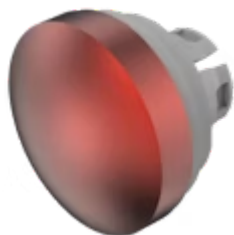
84-
7202.200A

Distribution by
Mouser



<https://mouser.eao.com/component/84-7202.200A...>

Your product:



84-7202.200A Lens

Loading ...

FRONT

Front form: Round

OPERATING-/INDICATION PART

Lens colour: Red

Lens material: Aluminium

Lens illumination: Non illuminated

Lens shape: Convex

Lens optics: opaque

Lens type: Raised above front bezel

Symbol: No Symbol

MECHANICAL CHARACTERISTICS

Weight: 0.004 kg

CERTIFICATE

REACH: REACH compliant

RoHS: RoHS compliant

OTHER

Short Description:

Lens, Ø 19.7 mm, Non illuminated, No Symbol, Red, Convex, Aluminium

Dimension:

Ø 19.7 mm

Hints:

The colour of anodised aluminium parts can vary due to technical production reasons