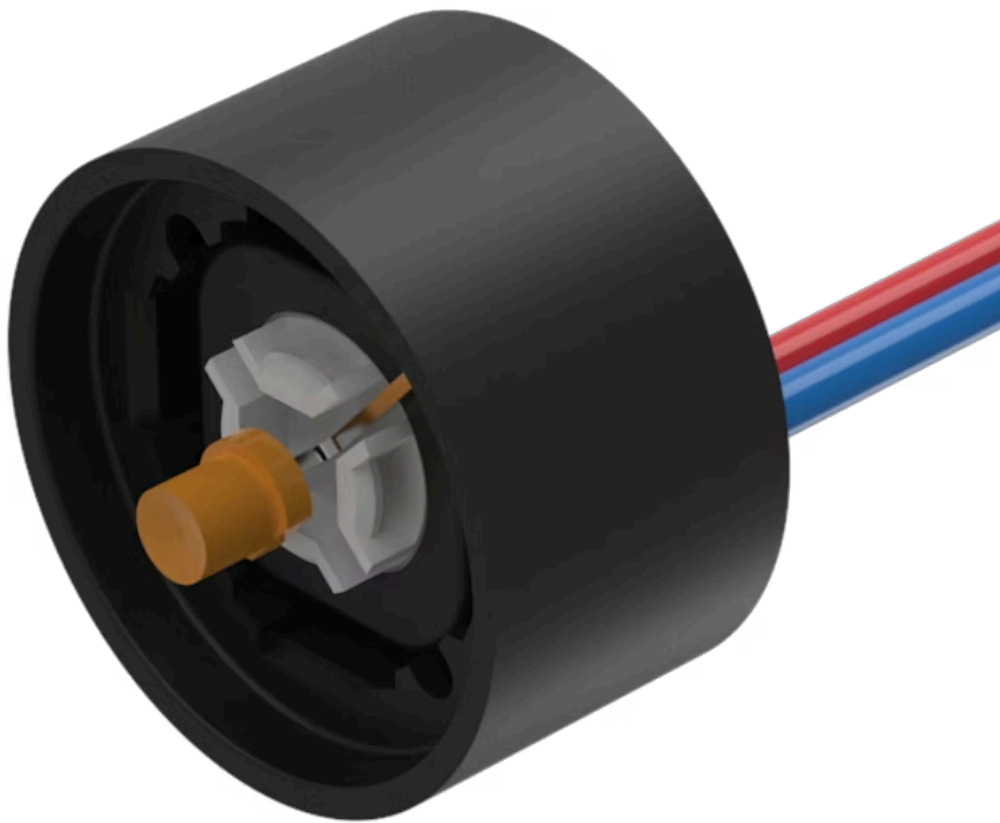


Indicator element

84-8001.3640

Distribution by
Mouser



<https://mouser.eao.com/component/84-8001.3640...>

Your product:



84-8001.3640 Indicator element

Loading . . .

OPERATING-/INDICATION PART

Illumination colour: Amber

ELECTRICAL CHARACTERISTICS

Operating voltage: 24 V DC ± 10 %

MECHANICAL CHARACTERISTICS

Terminal: Flat ribbon cable

Weight: 0.009 kg

AMBIENT CONDITION

IP Protection: IP40

CERTIFICATE

REACH: REACH compliant

RoHS: RoHS compliant

OTHER

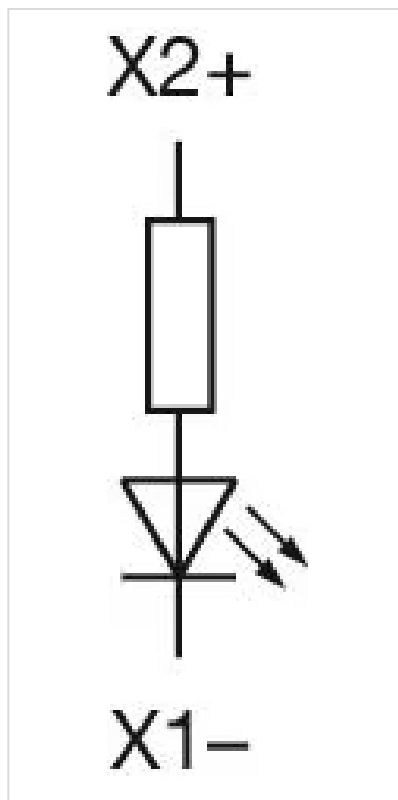
Short Description: Indicator element, Amber, Single-LED, 24 V DC ± 10 %, Flat ribbon cable

Kind of illumination: Single-LED

Hints: LED and built-in resistor included
Standard version: Cable length 300 mm
Other options on request: Customisation of cable and connectors, rear side fully sealed (IP 67)
Protection degree (rear side): IP 40, upgrade to IP 67 with plug Part No. 84-900 possible. With applications where strong vibrations occur, the plugs may become loose

Luminosity and wave length variations caused by LED manufacturing processes may cause slight differences regarding the illumination. The customer has to decide what resistor shall be used to the LED

Wiring diagrams:



Component layouts:

