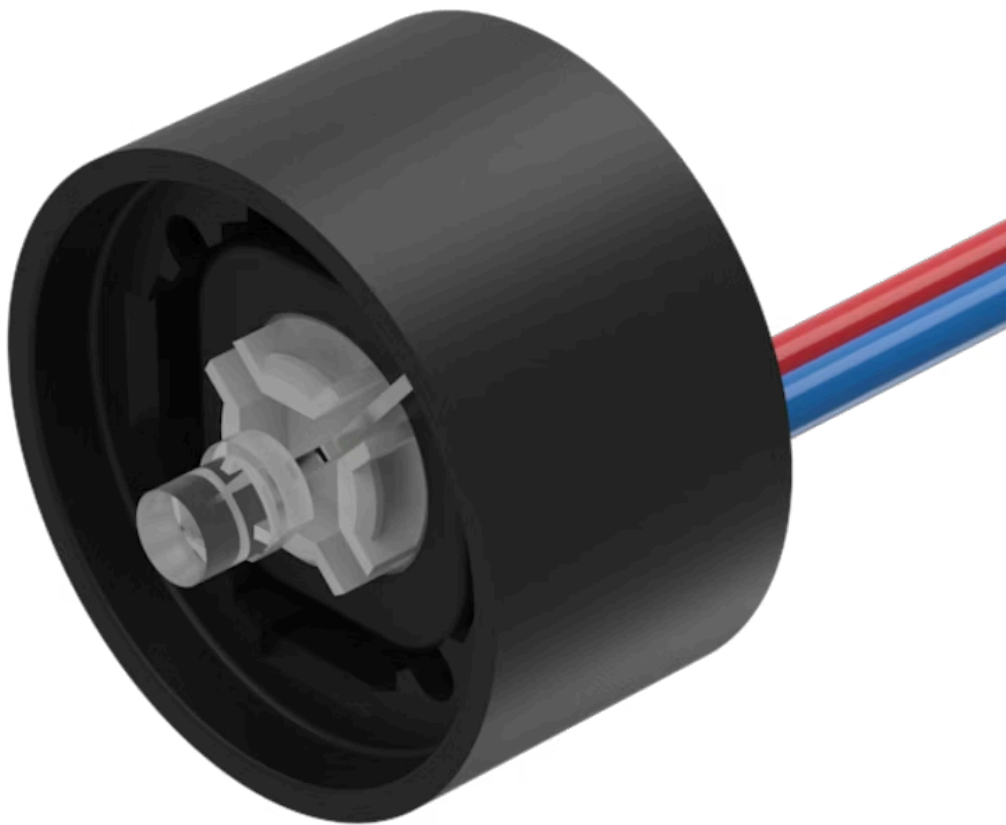


# Indicator element

84-8001.9640

Distribution by  
Mouser



<https://mouser.eao.com/component/84-8001.9640...>

Your product:

---



## 84-8001.9640 Indicator element

*Loading . . .*

### OPERATING-/INDICATION PART

**Illumination colour:** White

### ELECTRICAL CHARACTERISTICS

**Operating voltage:** 24 V DC  $\pm 10\%$

### MECHANICAL CHARACTERISTICS

**Terminal:** Flat ribbon cable

**Weight:** 0.009 kg

### AMBIENT CONDITION

**IP Protection:** IP40

### CERTIFICATE

**REACH:** REACH compliant

**RoHS:** RoHS compliant

### OTHER

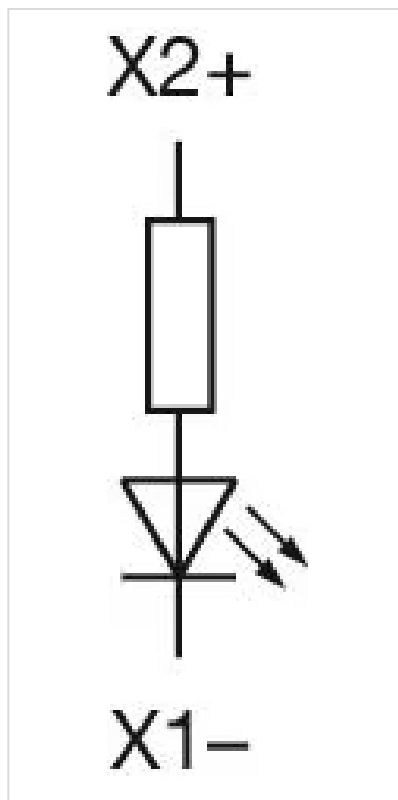
**Short Description:** Indicator element, White, Single-LED, 24 V DC  $\pm 10\%$ , Flat ribbon cable

**Kind of illumination:** Single-LED

**Hints:** LED and built-in resistor included  
Standard version: Cable length 300 mm  
Other options on request: Customisation of cable and connectors, rear side fully sealed (IP 67)  
Protection degree (rear side): IP 40, upgrade to IP 67 with plug Part No. 84-900 possible. With applications where strong vibrations occur, the plugs may become loose

Luminosity and wave length variations caused by LED manufacturing processes may cause slight differences regarding the illumination. The customer has to decide what resistor shall be used to the LED

**Wiring diagrams:**



**Component layouts:**

