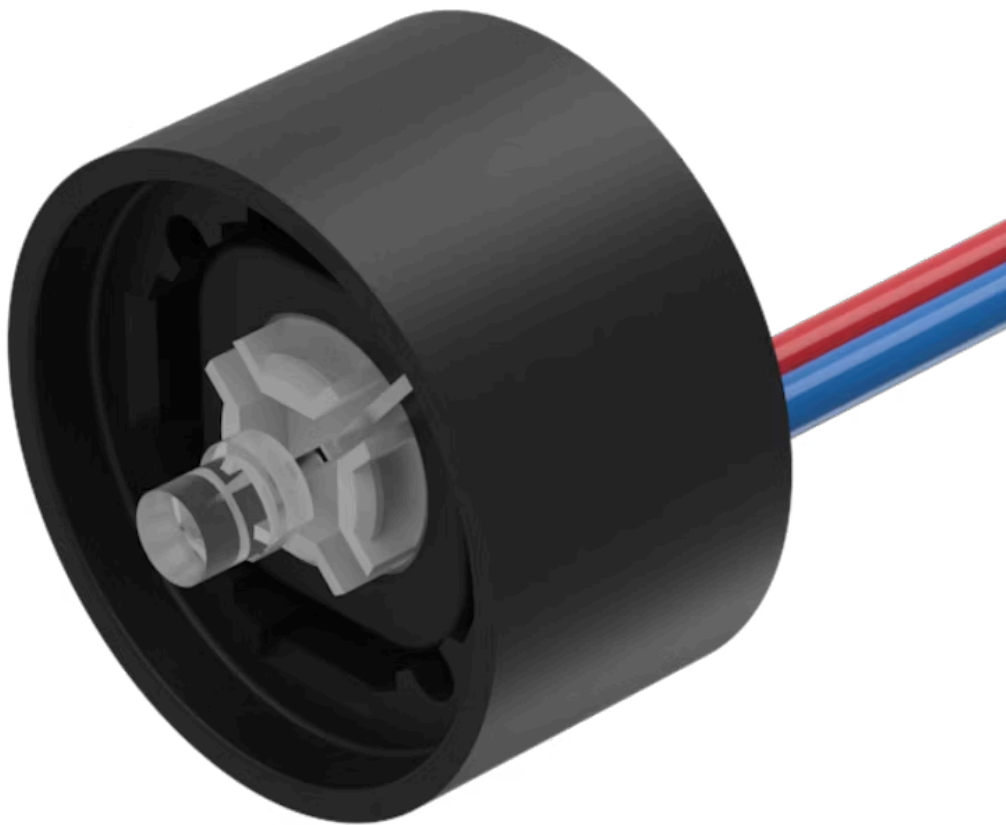


# Illumination element

84-8005.8640

Distribution by  
Mouser



<https://mouser.eao.com/component/84-8005.8640...>

Your product:

---



## 84-8005.8640 Illumination element

*Loading ...*

### OPERATING-/INDICATION PART

**Illumination colour:** Red / Green

### ELECTRICAL CHARACTERISTICS

**Forward voltage:**

**Operating voltage:** 24 V AC/DC  $\pm 10$  %

### MECHANICAL CHARACTERISTICS

**Terminal:** Flat ribbon cable

**Weight:** 0.007 kg

### AMBIENT CONDITION

**IP Protection:** IP67

### CERTIFICATE

**REACH:** REACH compliant

**RoHS:** RoHS compliant

### OTHER

**Short Description:** Illumination element, Red / Green, Bi-colour-LED, 24 V AC/DC  $\pm 10$  %, Flat ribbon cable

**Kind of illumination:** Bi-colour-LED

**Hints:** LED and built-in resistor included  
Standard version: Cable length 300 mm  
Other options on request: Customisation of cable and connectors, rear side fully sealed (IP 67)

Best illumination level will be reached with aluminium lens with spot, Part No. 84-7215.x00 and 84-7211.x00

Protection degree (rear side): IP 40, upgrade to IP 67 with plug Part No. 84-900 possible. With applications where strong vibrations occur, the plugs may become loose

Cable connection IP 67, rear side fully sealed. The illumination element of the cable version cannot be disconnected from the actuator any longer

Luminosity and wave length variations caused by LED manufacturing processes may cause slight differences regarding the illumination. The customer has to decide what resistor shall be used to the LED

**Wiring diagrams:**

