

E-stop protective shroud

84-909

Distribution by
Mouser



<https://mouser.eao.com/component/84-909/en/es...>

Your product:



84-909

E-stop protective shroud

FRONT

Colour: Yellow

MECHANICAL CHARACTERISTICS

Weight: 0.021 kg

AMBIENT CONDITION

IP front protection: IP40

OTHER

Short Description: E-stop protective shroud, Ø 45 mm, Metal, Yellow

Titel Accessory: E-stop protective shroud

Dimension: Ø 45 mm

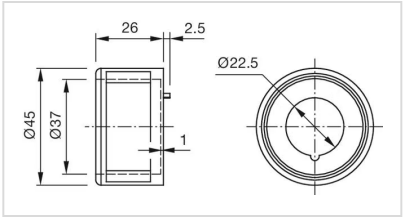
Material: Metal

Hints:

- Front panel thickness 1 ... 3 mm
- With anti-twist device
- When using a protective shroud the e-stop or stop-switch has to be turned by 180° to be mounted. See dimensional drawing
- The protection shroud Part No. 84-909 is not suitable for a proper use of emergency-stop. It can obstruct a spontaneous operation of the emergency-stop switch
- This shroud Part No. 84-906 is not compliant to EN ISO 13850. There are no restrictions when combined with stop switches.

Colour RAL: 1003 RAL

Dimension drawings:



for Part No. 84-909