

# Capacitive sensor switch with IO-Link Stainless Steel

Distribution by  
Mouser



84-ADKS-B12-04AC



<https://mouser.eao.com/p/84-ADKS-B12-04AC>

Your product:

---



84-ADKS-B12-04AC

Capacitive sensor switch with IO-Link  
Stainless Steel

#### FRONT

Front dimension:	Ø 30 mm
Front form:	Round
Front bezel material:	Stainless steel 316L

#### MOUNTING

Design:	Flush
Mounting cut-out:	Ø 22.5 mm
Mounting type:	Panel mounting

#### OPERATING-/INDICATION PART

Lens material:	Plastic
Lens illumination:	Illuminated
Lens shape:	Flush
Lens optics:	transparent
Symbol:	ON/OFF (B12)

#### ELECTRICAL CHARACTERISTICS

Operating voltage:	8.4 - 32 V DC
Communication interface:	IO-Link specification

#### MECHANICAL CHARACTERISTICS

Terminal:	Connector M12
-----------	---------------

**Switching system:** Capacitive

**Operating force:** No actuating force necessary

**Weight:** 0.015 kg

## AMBIENT CONDITION

**IP front protection:** IP69K

**IK front protection:** IK08

**Operating temperature:** – 30 °C ... + 65 °C

**Climate resistance:** Relative humidity, max. 95%, non-condensing

## CERTIFICATE

**Approbations:** CSA, EHEDG

**Conformities:** CE, UKCA

**REACH:** REACH compliant

**RoHS:** RoHS compliant

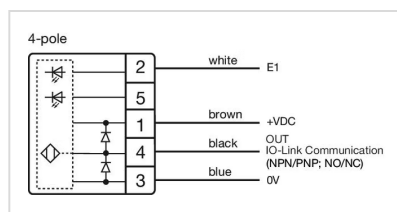
## OTHER

**Short Description:** Capacitive sensor switch with IO-Link Stainless Steel, Ø 22.5 mm, Ø 30 mm, Flush, Illuminated, Plastic, transparent, Round, Stainless steel 316L, Connector M12, IP69K, IK08, ON/OFF (B12)

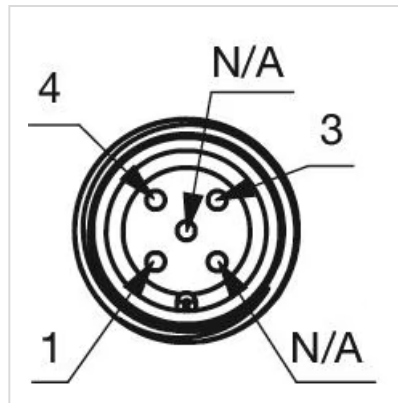
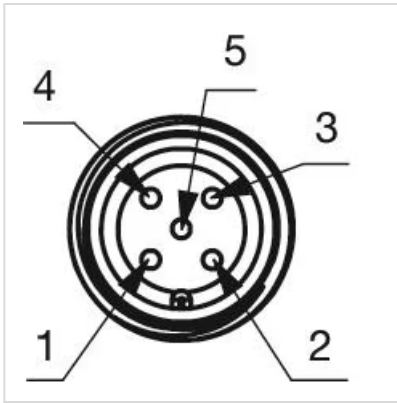
**Housing colour:** Black

**Housing material:** Plastic

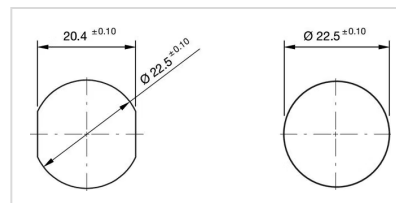
### Wiring diagrams:



### Component layouts:



#### Mounting cut-outs:



#### Dimension drawings:

