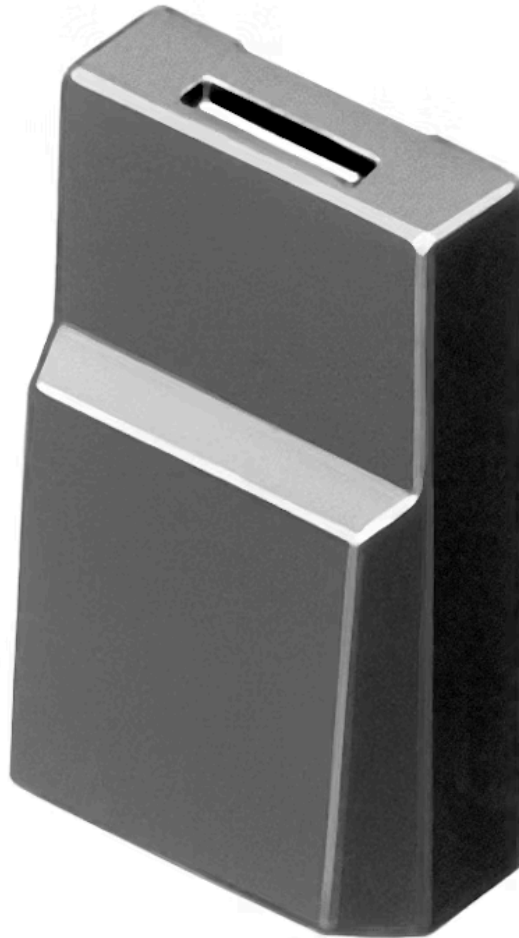


Lens

96-
921.5

Distribution by
Mouser



<https://mouser.eao.com/component/96-921.5/en/...>

Your product:



96-921.5 Lens

PRODUCT RANGE

Product Status: Phase-out

FRONT

Front form: Rectangular

OPERATING-/INDICATION PART

Lens colour: Green

Lens material: Plastic

Lens illumination: Non illuminated

Lens optics: opaque

Marking symbol shape: none

MECHANICAL CHARACTERISTICS

Weight: 0.001 kg

CERTIFICATE

REACH: REACH compliant

RoHS: RoHS compliant

OTHER

Short Description: Lens, 17.4 mm x 14.8 mm, Non illuminated, Green, Plastic

Dimension: 17.4 mm x 14.8 mm

Colour RAL:

6005 RAL