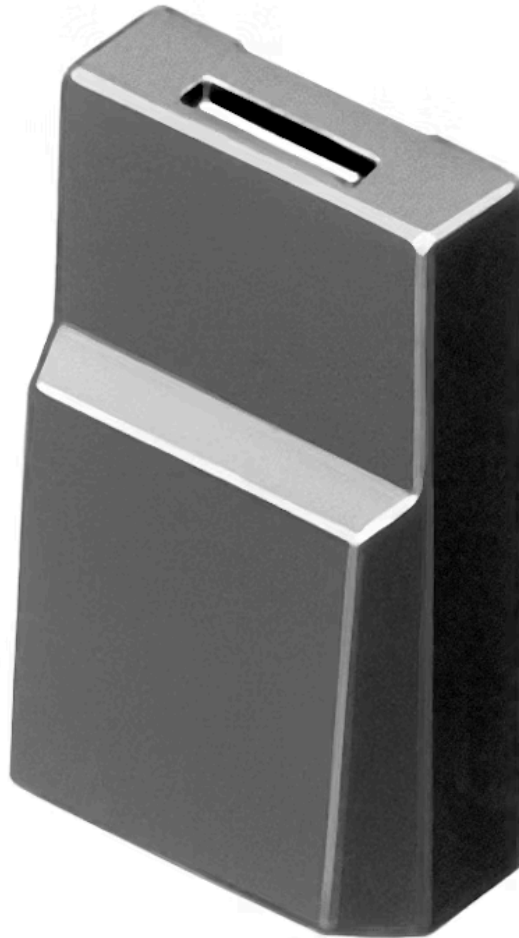


# Lens

96-  
921.8

Distribution by  
Mouser



<https://mouser.eao.com/component/96-921.8/en/...>

Your product:

---



## 96-921.8 Lens

### PRODUCT RANGE

**Product Status:** Phase-out

### FRONT

**Front form:** Rectangular

### OPERATING-/INDICATION PART

**Lens colour:** Grey

**Lens material:** Plastic

**Lens illumination:** Non illuminated

**Lens optics:** opaque

**Marking symbol shape:** none

### MECHANICAL CHARACTERISTICS

**Weight:** 0.001 kg

### CERTIFICATE

**REACH:** REACH compliant

**RoHS:** RoHS compliant

### OTHER

**Short Description:** Lens, 17.4 mm x 14.8 mm, Non illuminated, Grey, Plastic

**Dimension:** 17.4 mm x 14.8 mm

**Colour RAL:**

7012 RAL